

Creative Camera Club, Inc.

Meeting: July 21, 2011

7:00 p.m.

Crestwood Christian Church

See page 4 for directions!

member of lexarts (www.lexarts.org)



Lexington, KY
July 2011

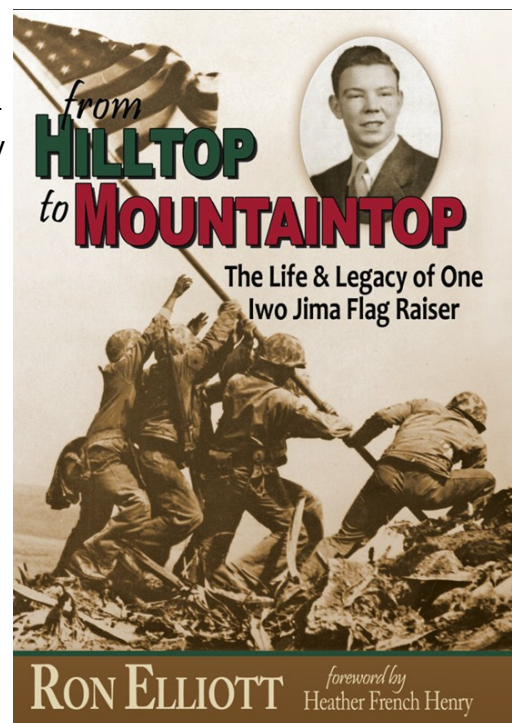


Ron Elliott, a native of Lincoln County, Kentucky, is a graduate of Stanford High School. Eastern Kentucky University and the University of Kentucky with degrees in math and computer science.

Ron's background includes involvement with the historic Apollo missions which placed Americans on the moon and a stint on the faculty in Kentucky's Community College system. A history buff from childhood, his interest in history was heightened by having a relative involved in the assassination of Kentucky's 1900 would-be governor, William Goebel.

With a 1/400th of a second click of the shutter from the camera of AP photographer Joe Rosenthal, Kentuckian Franklin Sousley and five of his fellow marines who raised an American flag on the island of Iwo Jima were immortalized on film in one of the most famous photographs of all time. Kentucky author and historian, Ron Elliott, will talk about this moment in photographic history as he presents his latest book, "from Hilltop to Mountaintop."

Mr. Elliott's story-telling ability and wealth of knowledge make him a popular speaker for literature classes, writing seminars, genealogical workshops and historical society meetings. Coupling those attributes with his remarkable research skills and a witty writing style produces well-accepted books, including *Assassination at the State House*, *The Silent Brigade*, *Inside the Beverly Hills Supper Club Fire*, *Through the Eyes of Lincoln*, (illustrated by John Snell's beautiful photography and period photographs) and, most recently, *From Hilltop to Mountaintop*, as well



(Continued on page 2)

“Fog / Mist” June Competition Results

COLOR IMAGES – ADVANCED

1st	John Snell
2nd	Bob Johnson
3rd	Randy Dinkins
HonMen	Tom Myers

COLOR IMAGES – INTERMEDIATE

1st	Ruth Oremus
2nd	Ruth Oremus
3rd	Beverly Buford
HonMen	Dave Richardon

COLOR IMAGES – BEGINNER

1st	Gary Teverbaugh
2nd	Kathy Jones
3rd	Pay Payne
HonMen	Tim James

BLACK AND WHITE - ADVANCED

1st	Mike Sternberger
2nd	Dan Smith

BLACK AND WHITE -BEGINNER

1st	Rob Bentley
-----	--------------------

(Continued from page 1)

as numerous magazine articles in such publications as *The Filson History Quarterly*, *The Kentucky Humanities Council Magazine* and *Kentucky Living*.

Also on Thursday July 21 - Don Mills will bring to the meeting a Speed Graphic camera, which is similar to the one used by Mr. Rosenthal to capture the historic photo, and Don will talk about the camera's features and use.

First Thursday

July 7 - Paul Atkinson on Event Photography. Paul has been the lead photographer for TopsInLex.com and has been a great help to other photographers.

Aug 4 - Tom Barnes has graciously agreed to speak briefly to the Club before our arboretum shoot . Tom will be speaking on photographing flowers,as well as his new book [How to Find and Photograph Kentucky Wildflowers](#).

Sep 1 - All about Calibration with John Robinson John will explain what it means to calibrate your equipment and take us through the processes to show what a difference proper calibration makes in producing our finished work.

Oct 6 - Taking Control - learning how to use your camera. Club members will be on hand to help us to use our stuff to its maximum potential. There will be hands-on opportunities and a chance to ask questions. Bring your equipment.

Nov 3 - Painting with Light (tentative). A chance to use this technique to create different images. Bring your camera.

Dec 1 - Lighting - how to use it to your best advantage.

Stuff for Sale or Trade

Madonna Courtney has a Canon 40D with a 28-135mm USM II, with 2 batteries, charger, box and manual for sale.

Find her at the meeting or give her a call

Things to shoot and things to see

Competition Topics 2012

February - Night Photography

Night photography refers to photographs taken outdoors between dusk and dawn. Night photographers generally have a choice between using artificial light and using a long exposure, exposing the scene for seconds, minutes, and even hours in order to give the film or digital sensor enough time to capture a usable image.

April - Ice / Snow

Okay so here's a definition: Snow is individual crystals of frozen water that are not compacted together; Ice, on the other hand, is tightly compacted, frozen water together to form sheet, block, brick - well, you get the idea.

June - Macro

Macro photography is close-up photography, usually of very small subjects. Classically, a macro photograph is one in which the size of the subject on the negative is greater than life size.

August - Rural Scenes

Rural scenes show the **country** or **countryside** in areas that are not urbanized. They have a low population density, and typically much of the land is devoted to agriculture.

October - Butterflies

A **butterfly** is a mainly day-flying insect of the order Lepidoptera, the butterflies and moths. Butterflies have large, often brightly colored wings, and conspicuous, fluttering flight.

Upcoming Events, Exhibits, Workshops

Free Workshops and Classes

Want to learn how to use Adobe CS3 Creative Suite, which includes Photoshop, Illustrator, Flash, Fireworks and Dreamweaver? For Free? These programs are powerful photo, graphic design and web creation programs for photographers and digital designers. Check out the Lexington Public Library's Northside Branch on Russell Cave.

Central KY Computer Society

Winter classes are underway with a host of cool offerings, including Digital Imaging, Creative Graphics, Photo Principals for Point & Shoot . check out all of them on their website: www.ckcs.org

Club Field Trip

Mark Your Calendars for July 28-31.

John Snell and his band of followers will be off for a photographic weekend in North Carolina.

Upcoming trips in the works:

Maysville KY: This trip is currently being planned by Dave Richardson and Matt Baker. Feel free to connect with them to help plan the trip.

Louisville Zoo: Charters & Lynn Osborne are planning a trip to the zoo to catch the animals. A date has not been set, but we are looking more toward the October time frame.

If you are interested in either of these trips, find one of the organizers and help us put it together.

Got something to share?

If you have an event, a showing, a photo op you would like to include in the Club Newsletter, send it in an email to LynnOsborne@insightbb.com

Ask Everybody:

Here we have a new section for the newsletter. I am John Robinson and I will start it off. Each month we hope to gather some info on one subject that will shed light on part of the vast subject that is *photography*. We will be asking our members to supply all of the answers. We have a range of experience, beginner to expert on the many areas of interest, and by sharing our curiosity and knowledge, we will also connect with one another.

The subject this month is - Color Management from camera to display to printing.

A large task, for sure, but a needed skill to end lots of frustration in this digital era. I will give you a Poor Man's way of color matching that I have used for many years and then in September, I will have a workshop on using one of the "color Spyderys" to set up a computer screen, and talk about getting the printer to match the newly corrected screen.

So... first what we need to get this column going. It is all member-driven, so each month we will give you a topic from areas of photography submitted by you and moderated by a different member. As I am the moderator this month please send me a short answer (1-2 paragraphs) on what you have been using to get your prints to match what you hoped they would look like either when you print them yourself or when you send them out to get printed.

My email is johnr@mis.net. Put in the subject line AE001 so my email program will catch it. Should we also try regular mail? If so then mail to John Robinson, 513 Graham Road, Danville 40422.

I will use your email and name with your answer in the Newsletter. That is where the making connections will happen.

Since this is the first column then we have to have some answers for next month so I will prime the pump and ask:

What is a favorite piece of photo technology, besides a camera or lens.

Lets call that AE002 in the subject line. (That's Ask Everybody # 002, get it?)

Also in your answer to that one let me know if you would be willing to compile the info and write up the August Ask Everybody column. If so, I will forward all answers to you for that month. Do you see the plan here? One person (me) will not be doing all of the work each month; it will be spread around.

So also send to me any topics you would like to "Ask Everybody" and if you would like to moderate and oversee that or any other topic.

Whew, that was longer than I expected.

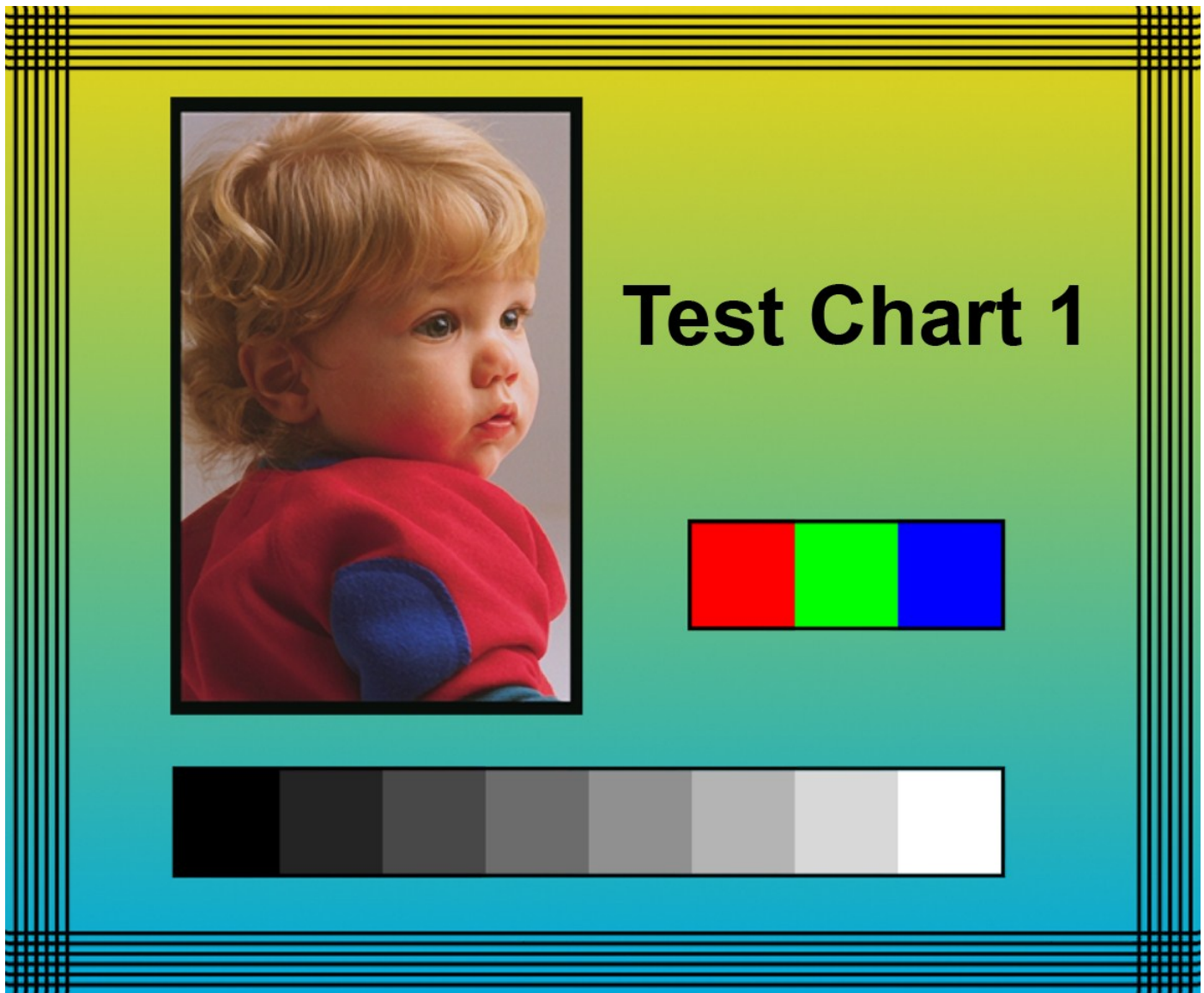
So for this month's topic -

Here is my **Poor Man's way of color matching** without using a hardware aid. Use this on your computer and printer or if you are over at a friend's late at night and have to make some prints.

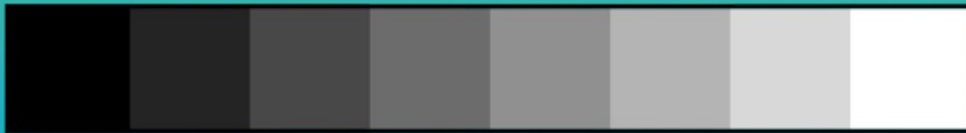
Your goal is to get your prints to match your computer screen right? I will not be so concerned with printer and paper - ICM profiles and color space with this quick fix. Trust me, it works when you have prints to make and you keep making test print after test print to get an acceptable one. You usually get the printer to match the screen but what about getting the screen to match the printer? If A=B then also B=A. I know there are so many printers with so many choices - such as with Epson using Photoenhance 4, Epson natural color, ICM, sRGB in their choices. You may refine these later but to get you in the ballpark, try this first.

I have an assumption with this process that you have some control over the monitor setting buttons other than just basic brightness and contrast, you need to also have separate RGB (Red Green Blue) sliders for this to work. The monitor driver on the computer in control panel may also have RGB

(cont'd on the next page)



Test Chart 1



(Red Green Blue) sliders for this to work. I also assume that your printing program (Photoshop and clones) lets you make color adjustments.

The key to any of this is take good notes so you don't waste so much time and paper/ink. A reason to take notes is that we are going to change (perhaps drastically) your monitor settings, so the other programs used by you on your computer may be affected. The internet may have very weird colors, but if you took notes then you are able to set these back to original.

Go into the setup menu either on the monitor or the display control panel and write down the original settings such as Brightness = 90, Contrast = 65, R=50, G=70, B=40.

First make a print from my test image of the boy and color chart above. It is also on our website, or I can email it to you. BTW, it has a color profile Adobe 1998. Ignore that last info right now.

Your print may be too light or dark or the color is off. Use the same paper and settings on the printer each time but the prints can be small to save paper. First try to get a print that is close to good color but don't try too hard. Make notes what printer setting you used. Try to standardize on printing from the same program each time.

First let me explain the biggest problem judging color from the computer screen to the final print. Ambient light. You are using transmitted light from the screen but reflected light from the print. The color from the computer screen doesn't change from day to night

Club News

but your lighting conditions when viewing the print do. You use some combination of tungsten bulb and fluorescent light at night, and you add some daylight at other times. Your eyes will make amazing corrections that you cannot control, and this will fool you into believing you have the perfect print. So, the solution is to standardize on one lighting condition. If you look at your prints day or night by themselves you may be satisfied but, hold them up to the computer screen under one of those day or night lighting conditions and the print and screen will not match anymore. You will not always have daylight, so I suggest either all tungsten or one of the Full Spectrum lights or light bulbs for always viewing prints. (But have you heard they will no longer be selling regular bulbs soon?) Bulbs are \$20.00 and lights are over \$100. This lighting has to be in your computer room also because you will be holding the print up to the screen. All of this info on lighting pertains to color matching with hardware (spyders) also.

Here is the basic info: use the buttons on your monitor and make the screen match the print. Some of you will be lucky and the print will be close, some will be way off. First adjust the brightness and contrast so you match the grey boxes. Remember you are not trying to get the monitor to look "good", you are trying to match the print. Then adjust the Red, Green, Blue sliders. Here is where it works. Now go into your photo printing program and make the photo look good. ALWAYS work on a copy of the image. Do a **save as** with a different name and then load that image to correct.

When you print the image this time it will be very close to matching your screen. If it looks good on the screen then the print will match. I know this is a long process to get here but it is lots easier the second time you set up a screen like this.

Remember the notes you took? You should have some screen settings written down such as Brightness = 90, Contrast = 65, R=50, G=70, B=40. You can use these to set the screen back to the original settings if you mess things up and want to forget that you ever tried this in the first place.

Let me know what you think,

John Robinson

We are looking for member slide shows. These are brief (5-10 minutes) presentations of images you took or want to share with the club. Sign up sheet is on the back table.

If you are interested in serving on the Board or as a Club Officer, see John Snell at the next meeting. He is the one-man nominating committee and would love to help you join the team.

The next Board meeting is Aug 2, 6.30 pm in the back room at Applebees on Nicholasville. We meet and eat. It is open to all.

We have access to a gallery at Woodland and KY Avenue in the Six Friends café. Sign up is on the table. We are looking for images to hang Sept 1 through Oct 30, Nov 1 - Dec 31, Jan 1 - Feb 28. Space is limited and your work will be featured with another member of the Club.

In the works - Panel discussions and Open Forum. What interests you? We are seeking topics to present to a panel of our members for discussion. The intent is to survey the panel, and foster (lively) discussion among those in attendance.

Workshop ideas? What would you like to learn? Is there something you know you want to share? Let us know so we can expand our workshop offerings.

Print Show News - have you paid your 2011 dues? Why not do that Thursday. Have you attended 6 meetings, events or workshops? You have between now and October to meet the requirements for the Print Show competition. Please remember - it is the Club Member's responsibility to ensure his attendance is registered at Club events. If you don't sign the registration sheets, there is no record of your attendance and it cannot be counted toward the requirement. So sign in, pay up and enjoy.

CALL FOR LEVELS POINTS

Please send Levels Points updates to: Mary Ann at mmmills@setel.com

If you have questions about whether your activity qualifies, please check the Levels Program section in the By Laws at www.creativecameraclub.org.



Full Moon

Jul 15, 2011
Aug 13, 2011

New Moon

Jul 30, 2011
Aug 28, 2011

2011 Club Calendar

Jan 3 pick up prints at LASC
6 Table Top Photography
20 Ron Curtis . 3D Photography

Feb 3 Tim & Bev Walden: Marketing
17 Competition . Sunrise/Sunset
18 Gallery Hop

Mar 3 Web Design Workshop
17 Insect Photo Salon

Apr 7 First Thursday
21 Competition . Fungi
16 Gallery Hop

May 5 First Thursday - The Computer
19 Randy Dinkins - HDR

Jun 2 First Thursday - Macro
16 Competition . Fog / Mist
 Jennifer Palumbo - KPPA
17 Gallery Hop

Jul 7 First Thursday - Parades
21 Ron Elliott

Aug 5 First Thursday
18 Competition . Historic

Sep 1 First Thursday
15 Club Meeting
16 Gallery Hop

Oct 6 First Thursday
20 Competition . Reflection

Nov 3 First Thursday
12 Print Show Submission
17 LASC . Print Show
18 Gallery Hop . LASC

Dec 1 First Thu . Composition
TBD Annual Christmas Party and
 Awards Banquet at Fasig.Tipton

All dates and venues are subject to change . especially those surrounding the 2011 print show and awards banquet.

All Club Calendar entries are tentative and subject to change. Check the website for up.to.date information.

Meeting Location

To get to the church . exit off New Circle Rd. at Bates Creek Rd. and go north (toward town), turn left on Albany Rd. (about the 4th stop light), go nearly one.half mile to the 4.way stop at Bellefonte Dr., and turn right onto Bellefonte. The church will be on the right just past Glendover Elementary School. Turn right into the second entrance off Bellefonte.

2011 Officers

President	Tom Myers	859.272.1150
Vice President	Dan Smith	859.420.7148
Secretary	Maryann Mills	859.234.6765
Treasurer	Don Mills	859.234.6765
Newsletter Editor	Lynn Osborne	859.231.7241
Board of Directors:		
	Madonna Courtney	859.987.7002
	Zane Williams	859.744.7944
	John Robinson	859.236.3894
Past President, John Snell		859.254.1929